

# Parts Manual

## TM12 Work Platform

**Serial Numbers 7352 - Current**

---

Publication Number: 107097-002

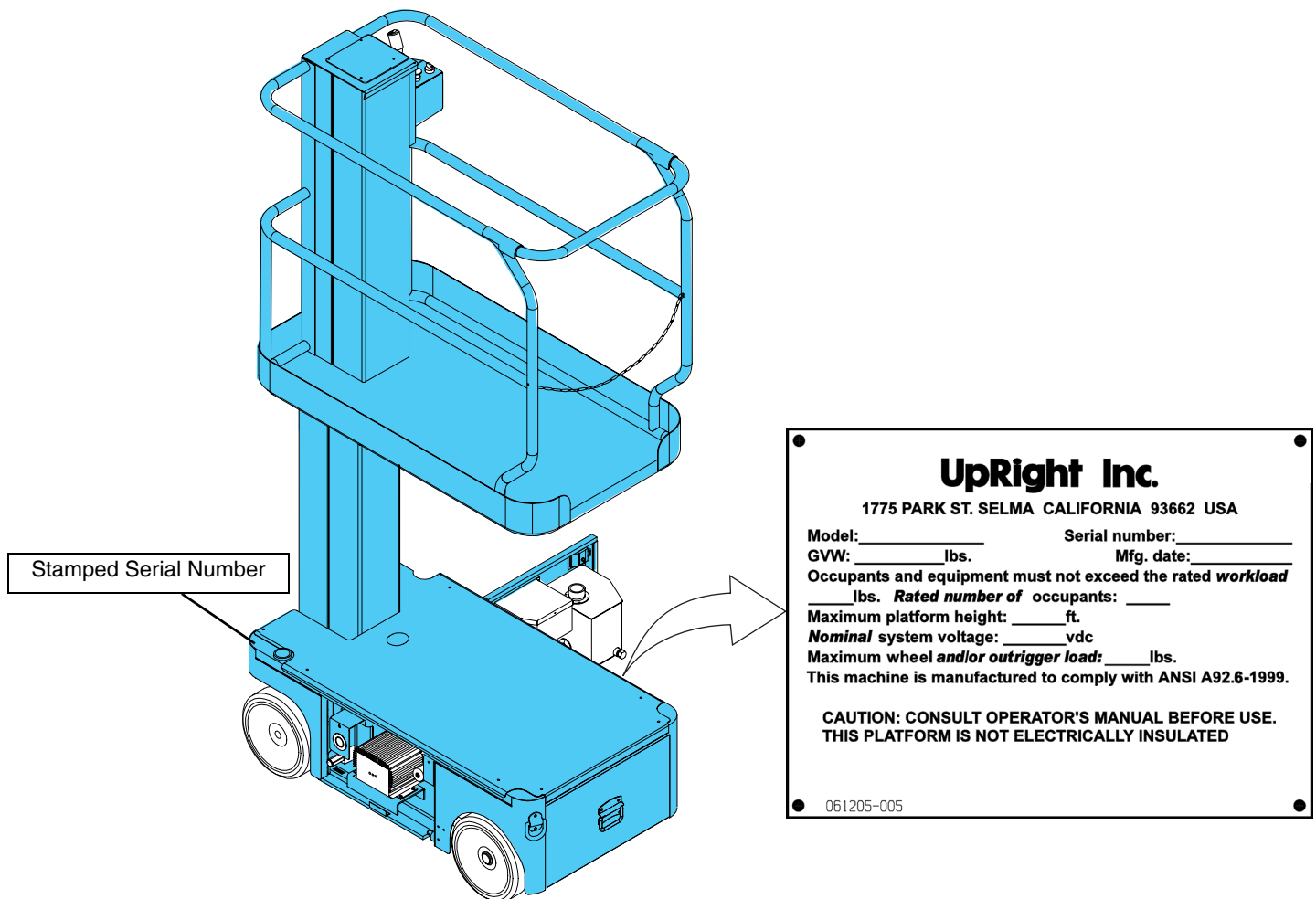
---

**UpRight**

# TM12

## Serial Number 7352 to current

When contacting UpRight for service or parts information, be sure to include the MODEL and SERIAL NUMBERS from the equipment nameplate. Should the nameplate be missing, the SERIAL NUMBER is also stamped on top of the chassis above the front axle pivot.



### UpRight, Inc.

801 South Pine Street  
Madera, California 93637

TEL: 559-662-3900

FAX: 559-673-6184

PARTS: 1-888-UR-PARTS

PARTS FAX: 1-800-669-9884

# UpRight

Call Toll Free in U.S.A.

1-800-926-LIFT

### UpRight

Unit S1, Park West Industrial Park  
Friel Avenue  
Nangor Road  
Dublin 12, Ireland

TEL: +353 1 620 9300

FAX: +353 1 620 9301

---

# TM12 PARTS MANUAL

This document lists and illustrates the replaceable assemblies and parts of this product, as manufactured by UpRight, Inc. Each parts list contains the component parts for that assembly.

---

## TABLE OF CONTENTS

Final Assembly		PQ Controller	
107000-000 .....	2	065512-000 .....	16
Basic Assembly		Electrical Box Assembly	
107001-001 .....	6	107008-000 .....	17
Chassis Assembly, 1 of 4		Flow Control Valve Assembly	
107002-001 .....	8	107061-000 .....	18
Chassis Assembly, 2 of 4		Hydraulic Tank Assembly	
107002-001 .....	9	107007-001 .....	19
Chassis Assembly, 3 of 4		Label Kit	
107002-001 .....	10	107012-010 .....	20
Chassis Assembly, 4 of 4		Horn With Pushbutton Option	
107002-001 .....	11	107031-000 .....	21
Hose Kit		Lanyard Option	
107011-001 .....	12	030793-000 .....	22
Control Valve Assembly			
101120-021 .....	14		
Controller Assembly			
107010-000 .....	15		

# Final Assembly

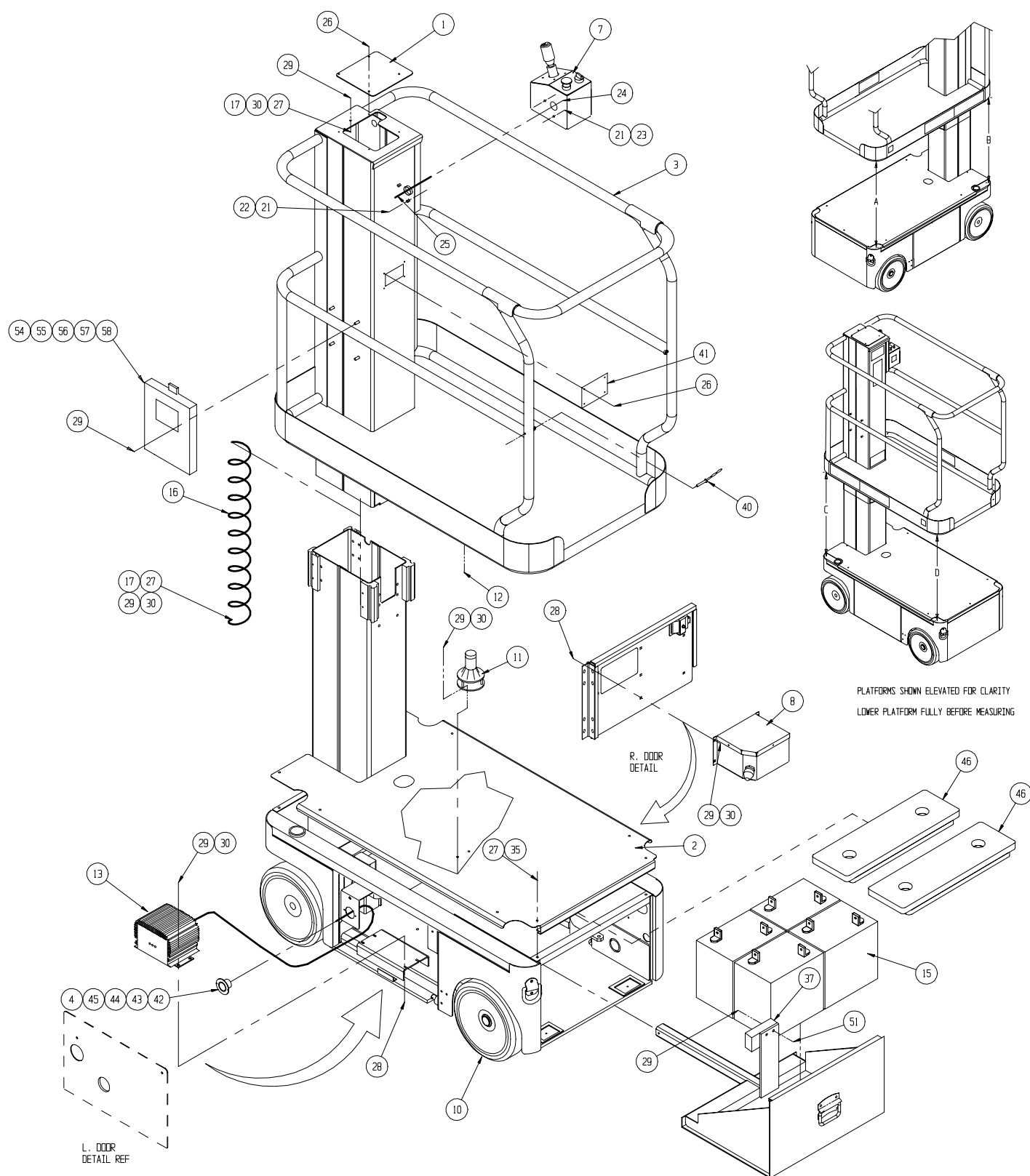
## 107000-000

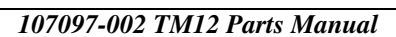
ITEM	PART NUMBER	DESCRIPTION	QTY
1	065543-000	COVER 4M	1
2	065536-000	TOP COVER	1
3	065580-001	PLATFORM WELDMENT	1
4	011240-001	WASHER #6	2
5	107012-010	DECAL KIT INSTL (NOT SHOWN)	1
6	107011-001	HOSE KIT (NOT SHOWN)	1
7	107010-000	CONTROLLER ASSY	1
8	107008-000	ELEC. BOX ASSY	1
9	029601-020	CONN RING 10-12 GA 1/4	2
10	107001-001	BASIC ASSY	1
11	029945-030	LEVEL SENSOR ASSY	1
12	010080-006	T-CLIP	4
13	069199-001	BATTERY CHARGER	1
14	010154-001	COVER BATTERY TERMINAL	8
15	015796-000	BATTERY 6V	4
16	107009-000	CONTROL CABLE ASSY	1
17	013919-018	CLAMP	2
18	107192-000	VALVE BLOCK CABLE ASSY	1
19	107193-000	LOWER CONTROL CABLE ASSY	1
20	107194-001	CHASSIS CABLE ASSY	1
21	011240-005	WASHER 5/16 STD FLAT	4
22	011248-005	LOCKNUT 5/16-18UNC HEX	2
23	011253-006	SCREW 5/16-18UNC HHC X 3/4	2
24	026616-008	NIPPLE 1 CHASE	1
25	029939-004	LOCKNUT 1 NPT	1
26	013923-004	SCREW #10 SLFTP X 1/2	8
27	011252-006	SCREW 1/4-20UNC HHC X 3/4	9
28	011829-006	BOLT 1/4-20UNC CARRIAGE X 3/4	7

ITEM	PART NUMBER	DESCRIPTION	QTY
29	011248-004	LOCKNUT 1/4-20UNC HEX	17
30	011240-004	WASHER 1/4 DIA STD FLAT	6
31	101182-006	CABLE ASSY W/ CONNECTOR	1
32	062125-016	BATTERY CABLE ASSY 5/16-3/8 X 16	2
33	064195-008	BATTERY CABLE ASSY 5/16-5/16 X 8	3
34	064195-014	BATTERY CABLE ASSY 5/16-5/16 X 14	1
35	014252-004	NUTSERT 1/4-20 UNC	4
36	064195-018	BATTERY CABLE ASSY 5/16-5/16 X 18	1
37	101182-005	CABLE ASSY W/ CONNECTOR	1
39	065369-001	HOSE GUARD X 18 (NOT SHOWN-SEE HOSE KIT)	2
40	063133-005	GUARD CHAIN ASSY	1
41	107197-000	PLATE - CHAIN COVER	1
42	029961-000	RECEPTACLE	1
43	011715-006	SCREW MACH #6-32 RD HD X 3/4 LG	2
44	011248-047	NUT #6-32 ESNA	2
45	029961-001	SEAL	1
46	107081-000	WELDMENT BALLAST	2
47	107015-001	HYD SCHM	REF
48	107016-000	ELEC SCHM	REF
50	110010-000	SPECIFICATION SHEET	REF
51	011252-012	SCREW 1/4-20 X 1 1/2	2
53	060540-001	DOCUMENTATION KIT	1
54	107099-002	SERVICE MANUAL	1
55	107097-002	PARTS MANUAL	1
56	060577-004	ANSI MANUAL	1
57	107098-002	OPERATOR MANUAL	1
58	010076-000	MANUAL CASE	1

## Drawing Drawing 1 of 2

MEASUREMENTS TAKEN BETWEEN TOP SURFACE OF  
CHASSIS FRAME AND BOTTOM SURFACE OF PLATFORM PAN  
MEASUREMENTS A, B, C, & D MUST BE WITHIN A RANGE  
THAT DOES NOT EXCEED 5/8"





**NOTES:**

---

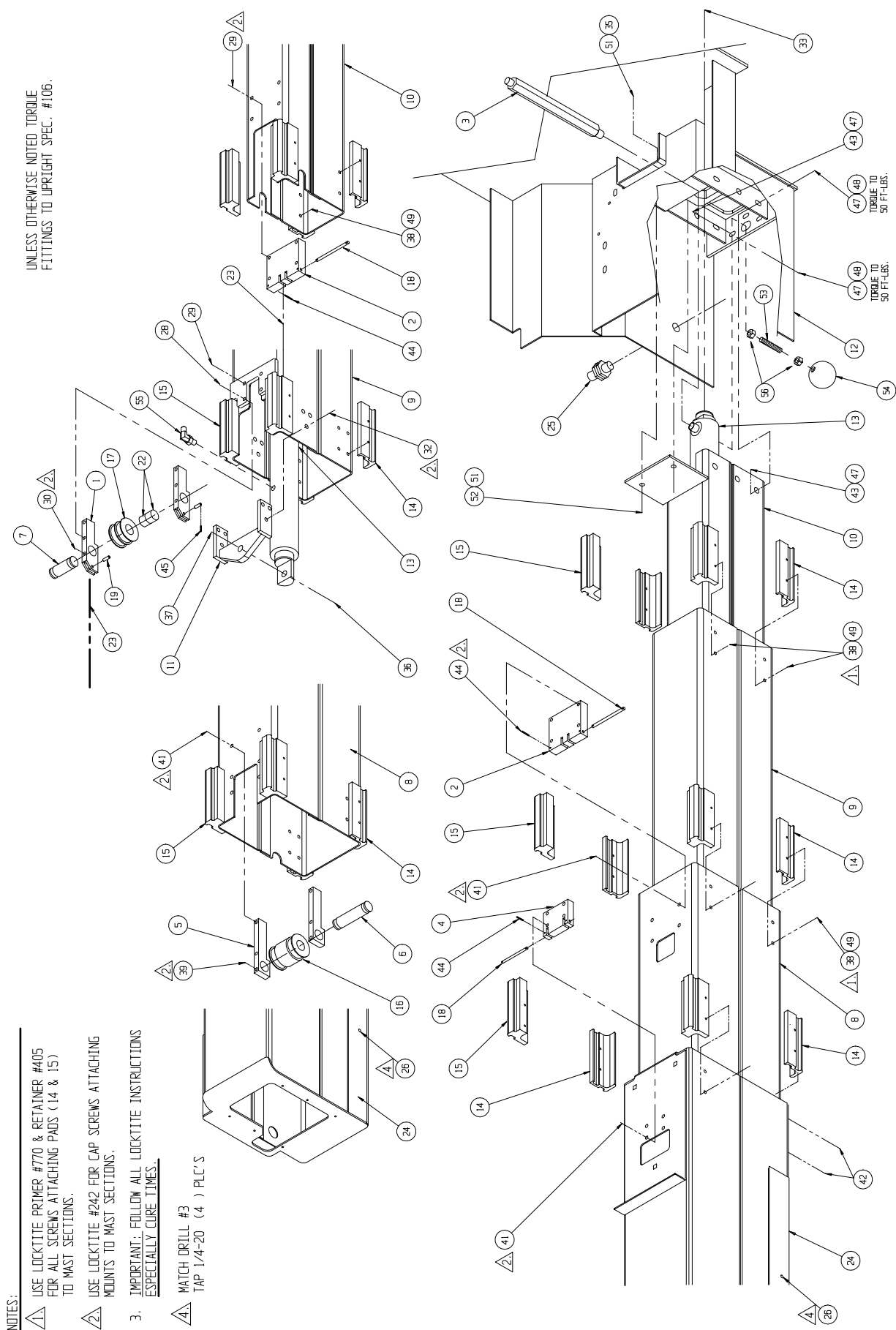
# Basic Assembly

## 107001-001

ITEM	PART NUMBER	DESCRIPTION	QTY
1	065562-001	INNER MOUNT	2
2	065561-001	ANCHOR INNER	2
3	107082-000	ADAPTER 6MB-6MJ X 9"	1
4	065542-001	OUTER ANCHOR	1
5	065540-000	OUTER MOUNT	2
6	065539-001	OUTER AXLE	1
7	065538-001	INNER AXLE	1
8	065491-001	SECOND INNER MAST WEDMENT 4M	1
9	065488-001	LOWER INNER MAST WELDMENT	1
10	065485-004	BASE MAST WELDMENT	1
11	065450-001	CYL. BAR & PAD WELDMENT	1
12	107002-001	CHASSIS ASSY	1
13	107060-001	LIFT CYLINDER ASSY	1
*	107060-010	SEAL KIT, LIFT CYLINDER	REF
14	065389-000	FRONT PAD	12
15	065388-000	REAR PAD	12
16	065387-001	PULLEY OUTER	1
17	065386-001	PULLEY INNER	1
18	065383-001	PIN	3
19	065382-001	ANCHOR PIN	2
22	062642-019	BEARING 7/8 ID X 3/4 LG	2
23	062167-103	CHAIN LEAF	4
24	065580-001	PLATFORM WELDMENT	REF
25	065366-020	SWITCH, PROXIMITY ASSY	1
26	013336-011	GREASE ZERK	4

ITEM	PART NUMBER	DESCRIPTION	QTY
28	011828-010	SCREW, 1/4-20 X 1 1/4 FH	2
29	011821-006	SCREW, 1/4-20 X 3/4 BH	6
30	012553-012	SCREW 1/4-20UNC SOC HD x 1 1/2	2
32	011253-004	SCREW 5/16-18UNC HHC X 1/2	6
33	013315-009	RING RETAINING	1
35	011248-006	LOCKNUT 3/8-16UNC HEX	2
36	011248-008	LOCKNUT 1/2-13UNC HEX	1
37	011256-016	SCREW 1/2-13UNC HHC X 2	1
38	013923-004	SCREW #10-ABHWH X 1/2	44
39	012553-010	SCREW 1/4-20UNC SOC HD x 1 1/4	2
41	012553-006	SCREW 1/4-20UNC SOC HD X 3/4	12
42	026553-001	POP-RIVET 3/16 X 1/8 GRIP	4
43	011264-210	SCREW HHC GR8 3/8-24 UNF X 1 1/4	9
44	011735-005	ROLL PIN 1/8 x 5/8	6
45	011751-006	COTTER PIN 1/16 X 3/4	4
47	011239-006	WASHER, FLAT ASTM A325 3/8	18
48	011261-106	NUT, HEX GR8 3/8-24 UNF	9
49	013949-003	WASHER #10 EXT. STAR	44
51	011240-006	WASHER 3/8 STD FLAT	4
52	011254-008	SCREW, HHC. 3/8-16 X 1	2
53	069040-001	THREADED STUD 1/4-28 X 2	1
54	069041-000	KNOB - RED	1
55	107083-000	FITTING 1/8 NPT - 1/4 TUBE 90°	1
56	020495-004	NUT, JAM 1/4-28	2



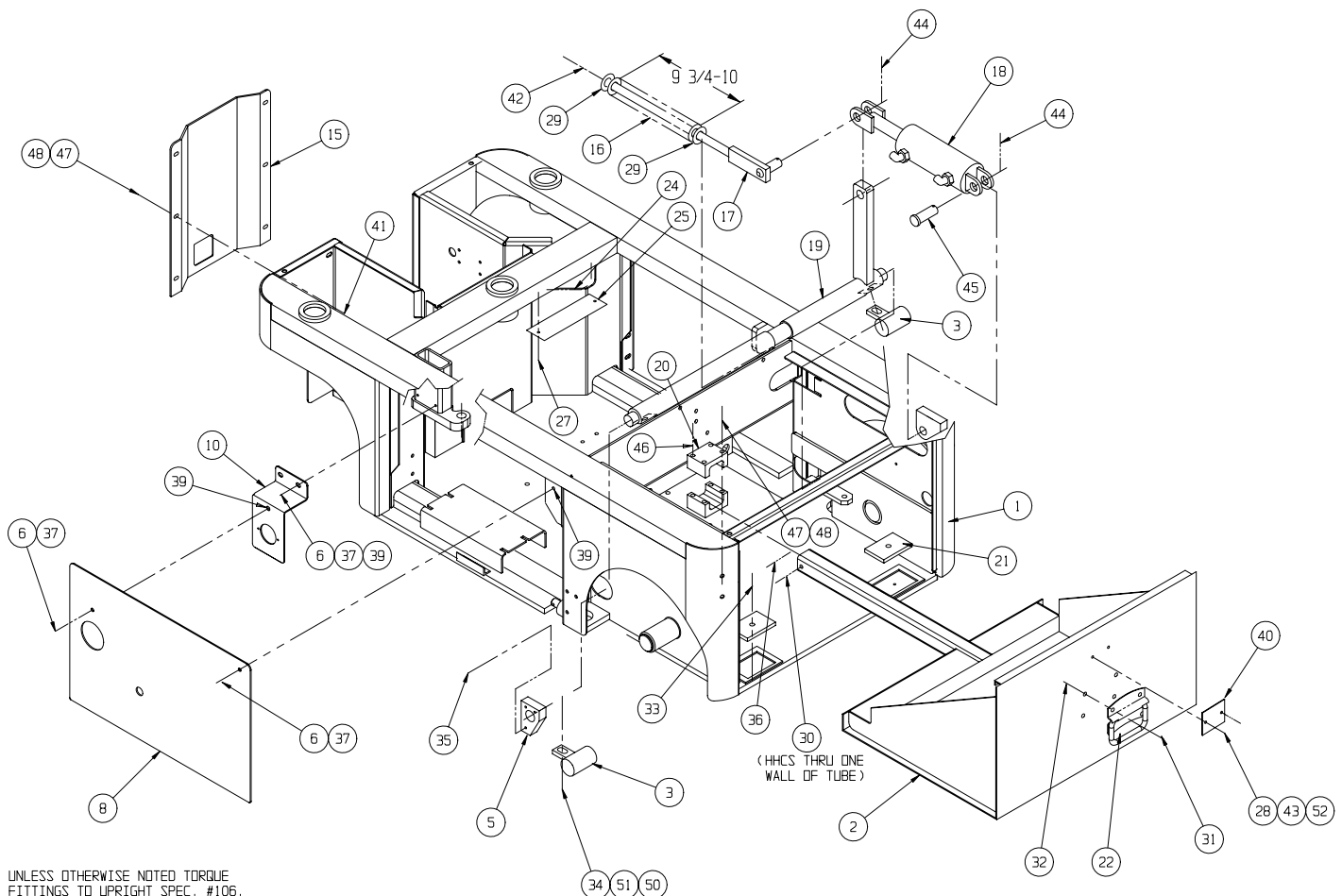


# Chassis Assembly, 1 of 4

## 107002-001

ITEM	PART NUMBER	DESCRIPTION	QTY
1	107133-000	CHASSIS WELDMENT TM12	1
2	065465-000	BATTERY PAN WELDMENT	1
3	065472-000	SHOE PARK BRAKE	2
5	065384-000	BRAKE BEARING	2
6	011252-004	SCREW HHC 1/4-20 X 1/2 LG	4
8	107131-002	CHASSIS ACCESS PANEL	1
10	107153-000	BRACKET CHARGER CORD	1
15	065532-000	FRONT COVER	1
16	010121-010	SPRING COMPRESSION	1
17	065474-000	TENSION BAR WELDMENT	1
18	065397-003	CYLINDER ASSY	1
*	065397-011	SEAL KIT, CYLINDER	REF
19	065469-000	BRAKE ACTUATOR WELDMENT	1
20	065385-000	GUIDE PAD	2
21	065380-000	SLIDE PAD	2
22	026541-016	HANDLE	1
24	061796-099	GROMMET (EDGING)	1.33
25	065656-000	WEAR PAD	2
27	065368-000	TACK	4
28	026553-004	RIVET 3/16 X .250-.375 GRIP	2
29	014996-010	WASHER 5/8 SAE	2

ITEM	PART NUMBER	DESCRIPTION	QTY
30	011252-006	SCREW HHC 1/4-20UNC x 3/4	1
31	064397-003	NUT ACORN 10-24 NC	4
32	011709-004	SCREW MRDHD 10-24UNC x 1/2	4
33	026553-008	RIVET 3/16 X .501-.625 GRIP	2
34	011256-012	SCREW HHC 1/2-13UNC x 1 1/2	2
35	014066-006	SCREW 1/4 AB x 3/4	6
36	011248-004	NUT HEX 1/4-20 UNC	1
37	011240-004	WASHER FLAT STD 1/4	4
39	014252-004	NUTSERT 1/4-20	4
40	065569-000	LATCH PLATE	1
41	011830-006	BOLT CARRIAGE 5/16-18 x 3/4	6
42	011248-010	NUT HEX 5/8-11 UNC	1
43	011240-003	WASHER STD FLAT #10	1
44	011757-010	COTTER PIN, RUE RING, 3/4	2
45	011848-041	PIN 3/4 PIVOT	1
47	011248-005	NUT HEX 5/16-18 UNC	10
48	011240-005	WASHER FLAT STD 5/16	10
50	011240-008	WASHER 1/2 STD FLAT	2
51	011238-008	WASHER 1/2 SPLIT LOCK	2
52	010414-001	LOCKING PIN ASSY X 6	1



# Chassis Assembly, 2 of 4

## 107002-001

ITEM	PART NUMBER	DESCRIPTION	QTY
100	101125-001	MOTOR HYDRAULIC	2
101	065393-003	WHEEL, DRIVE	2
102	107186-000	WHEEL YOKE, L.H.	1
103	107185-000	WHEEL YOKE, R.H.	1
104	065517-000	STEER LINK RH	1
105	065445-000	BELL CRANK WELDMT	1
106	065397-003	CYLINDER ASSY, BRAKE/STEER	1
*	065397-011	SEAL KIT, BRAKE/STEER CYLINDER	REF
108	011848-041	PIN 3/4 PIVOT	2
109	011757-010	COTTER PIN, RUE RING 3/4"	2
110	011753-012	PIN COTTER 1/8 x 1 1/2	2
111	065518-000	STEER LINK LH	1

ITEM	PART NUMBER	DESCRIPTION	QTY
112	011256-026	SCREW HHC GR5 1/2-13 UNC x 3 1/4	8
113	011248-008	NUT HEX 1/2-13 UNC	8
114	010092-011	WASHER THRUST 1 1/2	3
115	027931-068	BEARING 1 1/2	3
116	065534-000	STEER PIN	4
117	011736-012	ROLL PIN 3/16 DIA. x 1 1/2	4
118	011941-005	FITTING STRAIGHT 6-6S	4
119	011786-007	BUSHING MACHINE 1 1/2 I.D.	3
120	013315-009	RETAINING RING	3
121	027931-022	BEARING 3/4 I.D.	5
122	010092-005	WASHER THRUST 3/4 I.D.	4
123	011240-008	WASHER FLAT STD 1/2	8

## NOTES:

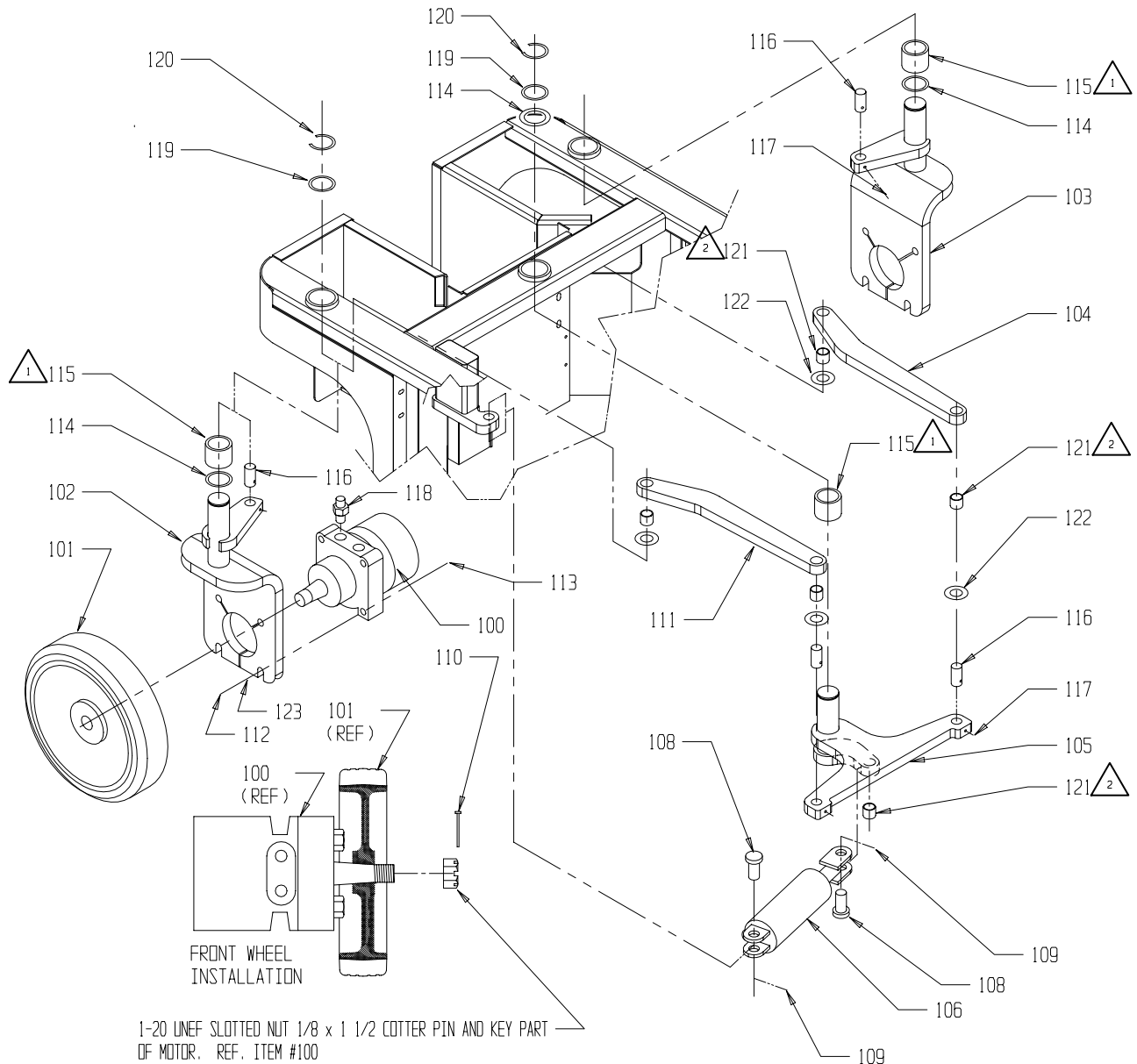


BURNISH BEARINGS AFTER ASSEMBLY TO 1.502/1.504.



BURNISH BEARINGS AFTER ASSEMBLY TO .750/-.752.

UNLESS OTHERWISE NOTED TORQUE FITTING TO UPRIGHT SPEC. # 106

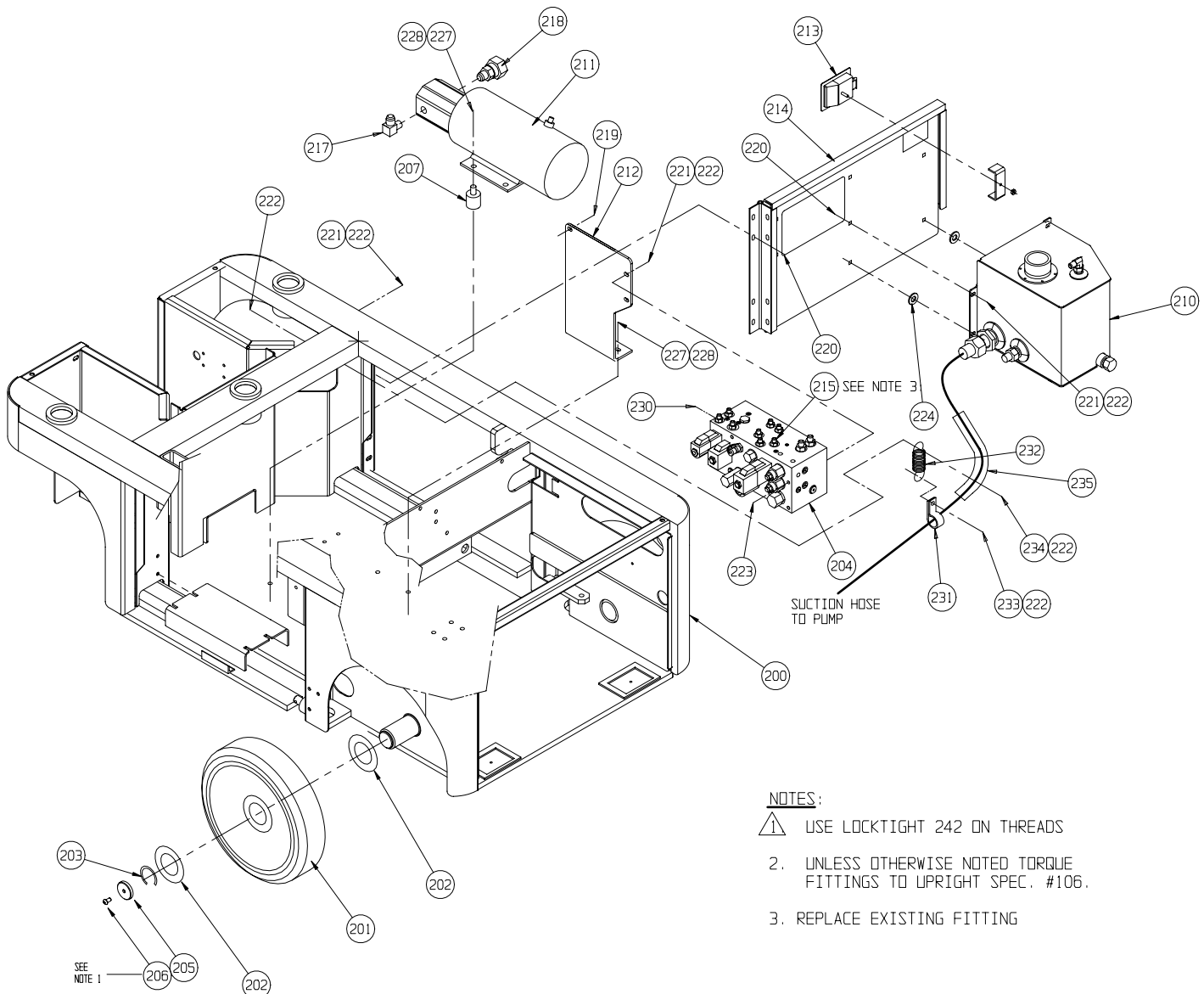


1-20 UNEF SLOTTED NUT 1/8 x 1 1/2 COTTER PIN AND KEY PART OF MOTOR. REF. ITEM #100  
CLEAN MOTOR SHAFT AND HUB BORE.  
LUBRICATE NUT FACE AND THREADS.  
TORQUE SLOTTED NUT TO 75 ±5 FT LBS BOTH WHEELS.

# Chassis Assembly, 3 of 4

## 107002-001

ITEM	PART NUMBER	DESCRIPTION	QTY	ITEM	PART NUMBER	DESCRIPTION	QTY
200	107133-000	CHASSIS WELDMENT	REF	218	015959-004	FITTING 8MBH-12FJX	1
201	065392-021	WHEEL IDLER	2	219	013919-010	CLAMP HOSE	1
202	011786-014	BUSHING MACHINE 1 3/4 I.D.	4	220	011829-006	CARRIAGE BOLT 1/4-20 x 3/4	7
203	013315-009	RETAINING RING 1 1/2	2	221	011240-004	WASHER FLAT STD 1/4	10
204	101120-021	CONTROL VALVE ASSEMBLY	1	222	011248-004	NUT HEX 1/4-20 UNC	15
205	065513-000	END CAP	2	223	011252-040	SCREW HHC 1/4-20 X 5	3
206	011823-006	SCREW 3/8-16 BUTT HD X 3/4	2	224	107079-000	WASHER, RUBBER	2
207	066046-007	MOUNT, VIBRATION	4	227	011240-005	WASHER FLAT 5/16	6
210	107007-001	HYD RESERVOIR ASSY	1	228	011248-005	NUT HEX 5/16-18	6
211	101230-000	POWER UNIT	1	230	020733-001	FITTING TEE #4	1
212	107152-000	BRACKET, CONTROL VALVE MOUNT	1	231	020398-012	CLAMP	1
213	065395-000	LATCH	1	232	068630-000	SPRING	1
214	107150-000	PANEL WELDMENT RH	1	233	011252-004	SCREW HHC 1/4-20 X 1/2	1
215	031006-004	FITTING STR 4MB-4MJ W/ .031 ORIFICE	1	234	011252-008	SCREW HHC 1/4-20 X 1	1
217	011934-004	FITTING 90 6MBH-6MJ	1	234	065369-002	HOSE GUARD	1

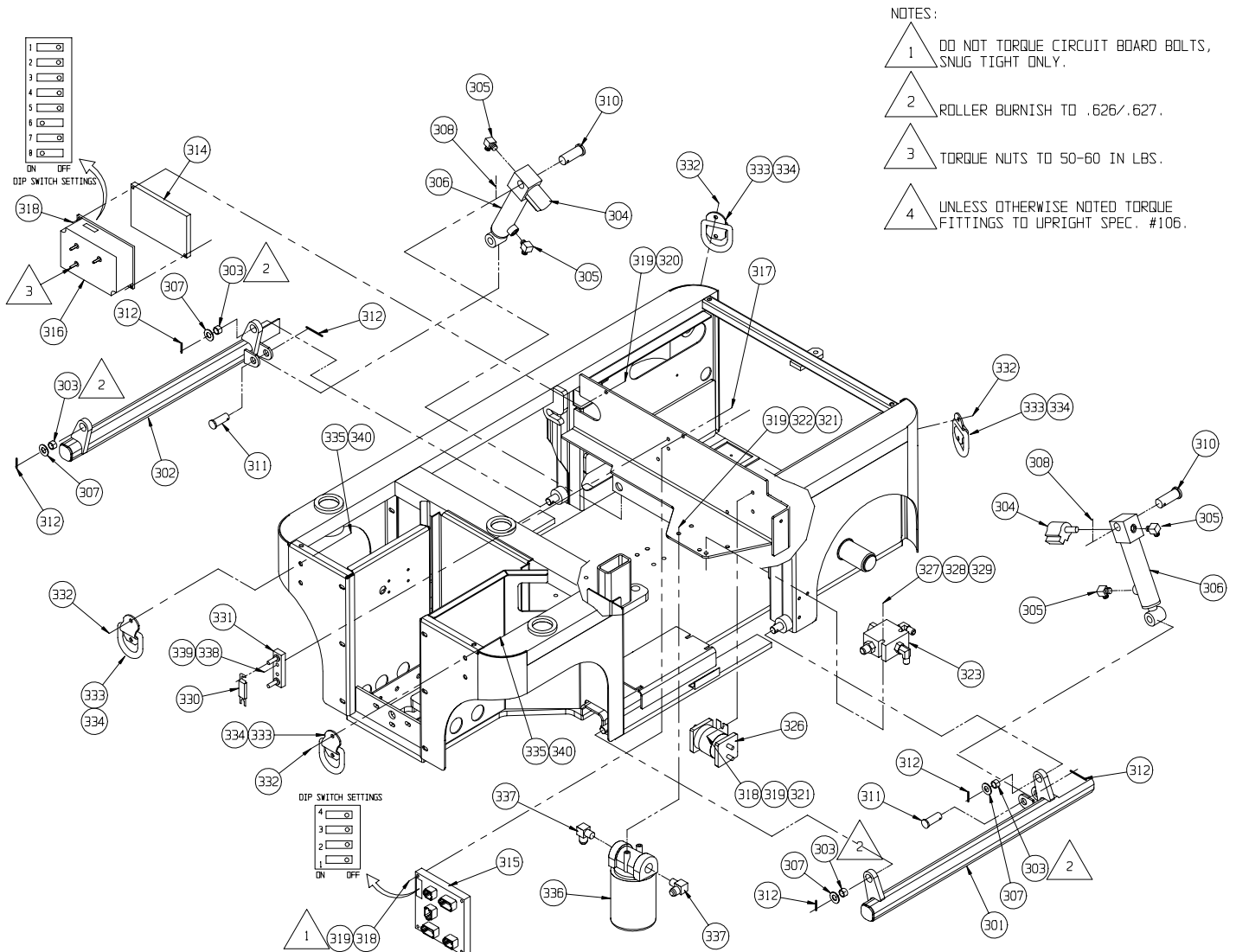


# Chassis Assembly, 4 of 4

## 107002-001

ITEM	PART NUMBER	DESCRIPTION	QTY
301	107179-000	GUARD WELDMENT-L.H.	1
302	107180-000	GUARD WELDMENT-R.H.	1
303	027931-063	BRONZE BUSHING #AA 710-27	4
304	063973-001	VALVE N.C.	2
305	011934-001	FITTING 4MBH-4MJ	4
306	065970-001	CYLINDER DEPRESSION	2
*	065970-011	SEAL KIT, CYLINDER DEPRESSION	REF
307	014996-010	WASHER 5/8 SAE	4
308	011757-010	COTTER PIN, 3/4 RUE RING	2
310	011848-019	CLEVIS PIN 3/4 X 2 1/2	2
311	011848-009	CLEVIS PIN 5/8 X2	2
312	011757-007	COTTER PIN, 5/8 RUE RING	6
314	065984-000	HEATSINK PLATE	1
315	065709-001	CIRCUIT BOARD	1
316	065708-001	MOTOR CONTROL	1
317	011252-012	BOLT 1/4-20 UNC X 1 1/2	2
318	011248-004	LOCKNUT 1/4-20 HEX	6
319	011240-004	WASHER 1/4 DIA STD FLAT	8
320	011252-010	SCREW HHC 1/4-20 X 1 1/4	2

ITEM	PART NUMBER	DESCRIPTION	QTY
321	011252-006	SCREW HHC 1/4-20 X 3/4	4
322	011238-004	WASHER SPLIT LOCK 1/4	2
323	107061-000	FLOW CONTROL VALVE ASSY	1
326	010122-001	RELAY	1
327	011248-005	NUT HEX 5/16-18	2
328	011240-005	WASHER 5/16 FLAT	4
329	011253-018	SCREW HHC 5/16-18 X 2 1/4	2
330	010148-001	FUSE	1
331	010149-000	FUSE BLOCK	1
332	011254-008	SCREW HHC 3/8-16 X 1	8
333	107080-000	BRACKET - D-RING	4
334	107080-001	D-RING	4
335	011248-006	NUT HEX ESNA 3/8-16	8
336	005154-001	FILTER	1
337	011940-034	FITTING 90 12MP-6MJ	2
338	011709-008	SCREW #10-24 X 1	2
339	011248-003	NUT HEX #10-24	2
340	011240-006	WASHER 3/8 FLAT	8

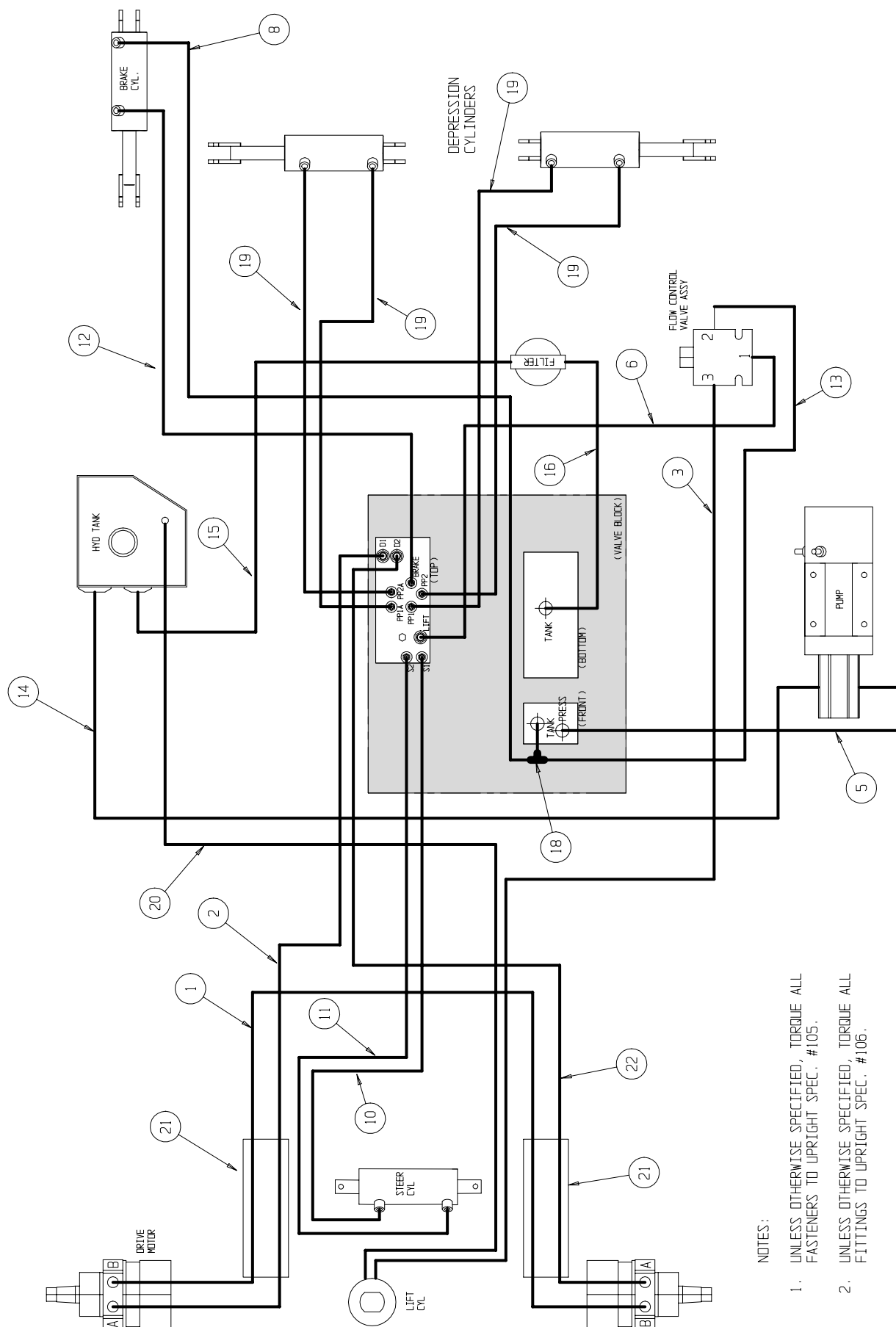


# Hose Kit

## 107011-001

ITEM	PART NUMBER	DESCRIPTION	QTY
1	065419-042	HOSE ASSY 1/4 X 42 (6FJX-6FJX)	1
2	107092-041	HOSE ASSY 1/4 X 41 (6FJX-6FJX 90)	1
3	107092-025	HOSE ASSY 1/4 X 25 (6FJX-6FJX 90)	1
5	068965-017	HOSE ASSY 3/8 X 17 (6FJX-6FJX X 90)	1
6	068965-038	HOSE ASSY 3/8 X 38 (6FJX-6FJX X 90)	1
8	107091-047	HOSE ASSY 3/16 X 47 (4FJX-4FJX X 90)	1
10	107090-035	HOSE ASSY 1/4 X 35 (4FJX-4FJX X 90)	1
11	107090-029	HOSE ASSY 1/4 X 29 (4FJX-4FJX X 90)	1
12	107091-024	HOSE ASSY 3/16 X 24 (4FJX-4FJX X 90)	1

ITEM	PART NUMBER	DESCRIPTION	QTY
13	061351-025	HOSE ASSY 1/8 X 40 (4FJX-4FJX)	1
14	061789-026	HOSE ASSY 3/4 X 26 (12FJX-12MP)	1
15	068965-018	HOSE ASSY 3/8 x 18 (6FJX-6FJX X 90)	1
16	060861-054	HOSE ASSY 3/8 X 40 1/2 (6FJX - 6FJX)	1
18	020733-001	FITTING, TEE #4	REF
19	107091-024	HOSE ASSY 3/16 X 24	4
20	107085-001	TUBE BLACK POLY, 1/4" X 96"	1
21	065369-099	HOSE GUARD NYLON X 18"	REF
22	107092-044	HOSE ASSY 1/4 X 44 (6FJX-6FJX 90)	1



## NOTES:

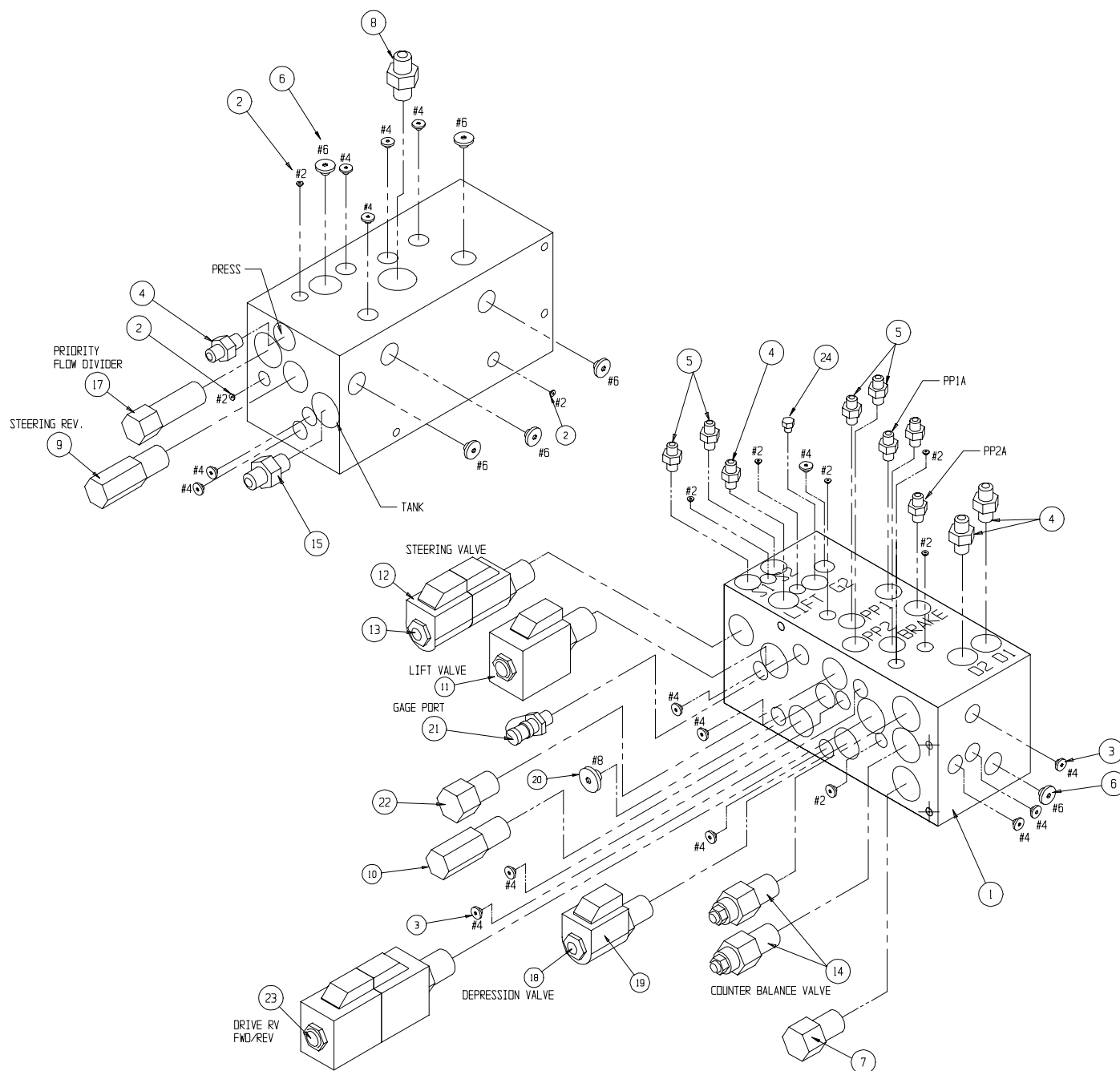
1. UNLESS OTHERWISE SPECIFIED, TORQUE ALL FASTENERS TO UPRIGHT SPEC. #105.
2. UNLESS OTHERWISE SPECIFIED, TORQUE ALL FITTINGS TO UPRIGHT SPEC. #106.

# Control Valve Assembly

## 101120-021

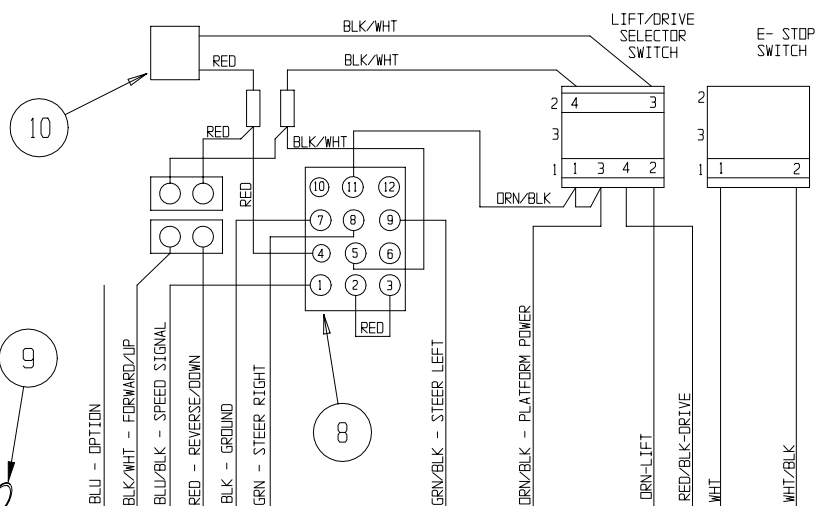
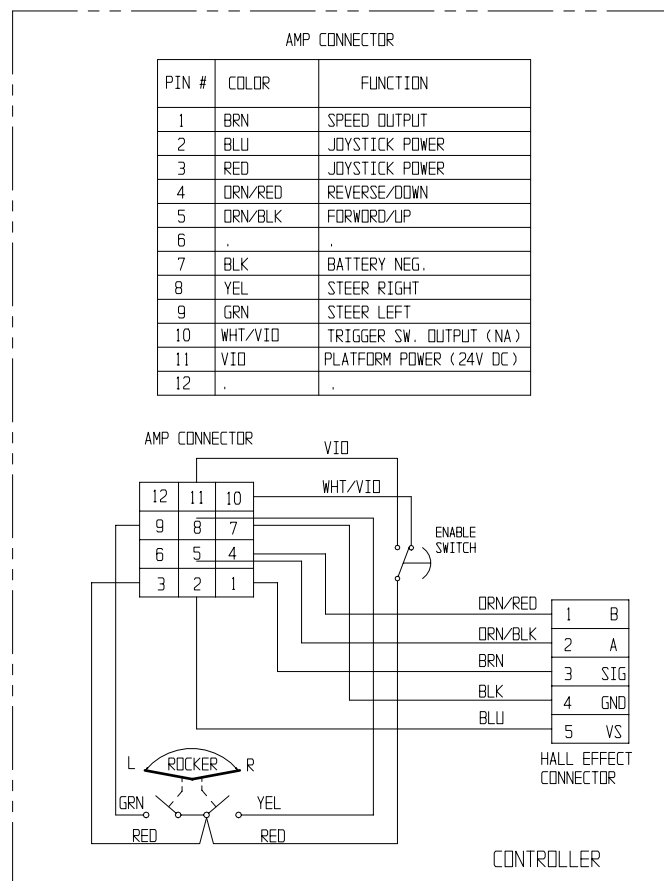
ITEM	PART NO.	DESCRIPTION	QTY
1	100020-040	CONTROL VALVE BLOCK	1
2	012004-002	FITTING #2 PLUG	9
3	012004-004	FITTING #4 PLUG	15
4	011941-005	FITTING STRAIGHT 6MB - 6MJ	3
5	011941-001	FITTING STR 4MBH - 4MJ	7
6	012004-006	FITTING PLUG #6	6
7	063955-008	PLUG CAVITY #8 2 WAY	1
8	011941-009	FITTING 8MB-6MJX	1
9	060390-013	RELIEF VALVE, STEERING (1500 PSI)	1
10	060390-025	RELIEF VALVE, MAIN (3000 PSI)	1
11	063923-006	2 POS - 4 WAY SOLENOID W/ COIL	1
12	101120-033	COIL	2

ITEM	PART NO.	DESCRIPTION	QTY
13	064845-000	3 POS - 4 WAY SOLENOID W/ COILS	1
14	101120-035	COUNTERBALANCE VALVE	2
15	011941-008	FITTING STR 8MB-4MJ	1
17	064843-000	FLOW DIVIDER VALVE (1.0 GPM)	1
18	063973-001	2 POS POPPET VALVE W/ COIL	1
19	101120-033	COIL	1
20	012004-008	FITTING #8 PLUG	1
21	063965-001	FITTING GAGE	1
22	064841-000	CHECK VALVE	1
23	063923-021	3 POS - 4 WAY SOLENOID W/ COILS	1
24	020021-004	FITTING, PLUG #4	1



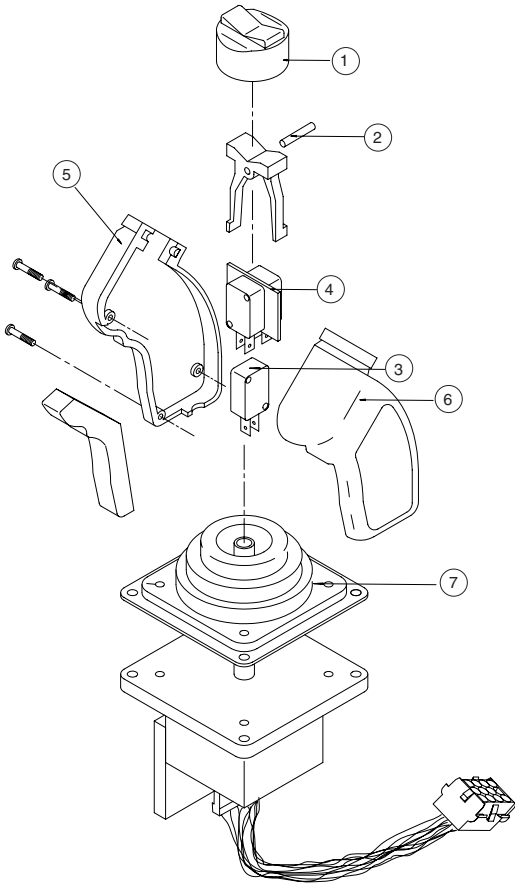


ITEM	PART NO.	DESCRIPTION	QTY
8	063956-003	CONN 12 PIN MATE N LOC	1
9	064462-029	HOLE PLUG	1
10	107054-001	CAPACITOR HARNESS	1
11	066805-010	CONTACT BLOCK NO	1
14	011826-004	SCREW 10-32 SLFTP X 1/2	6
15	026525-008	SCREW #8 SLFTP ABHWH X 1	4



PQ Controller  
065512-000

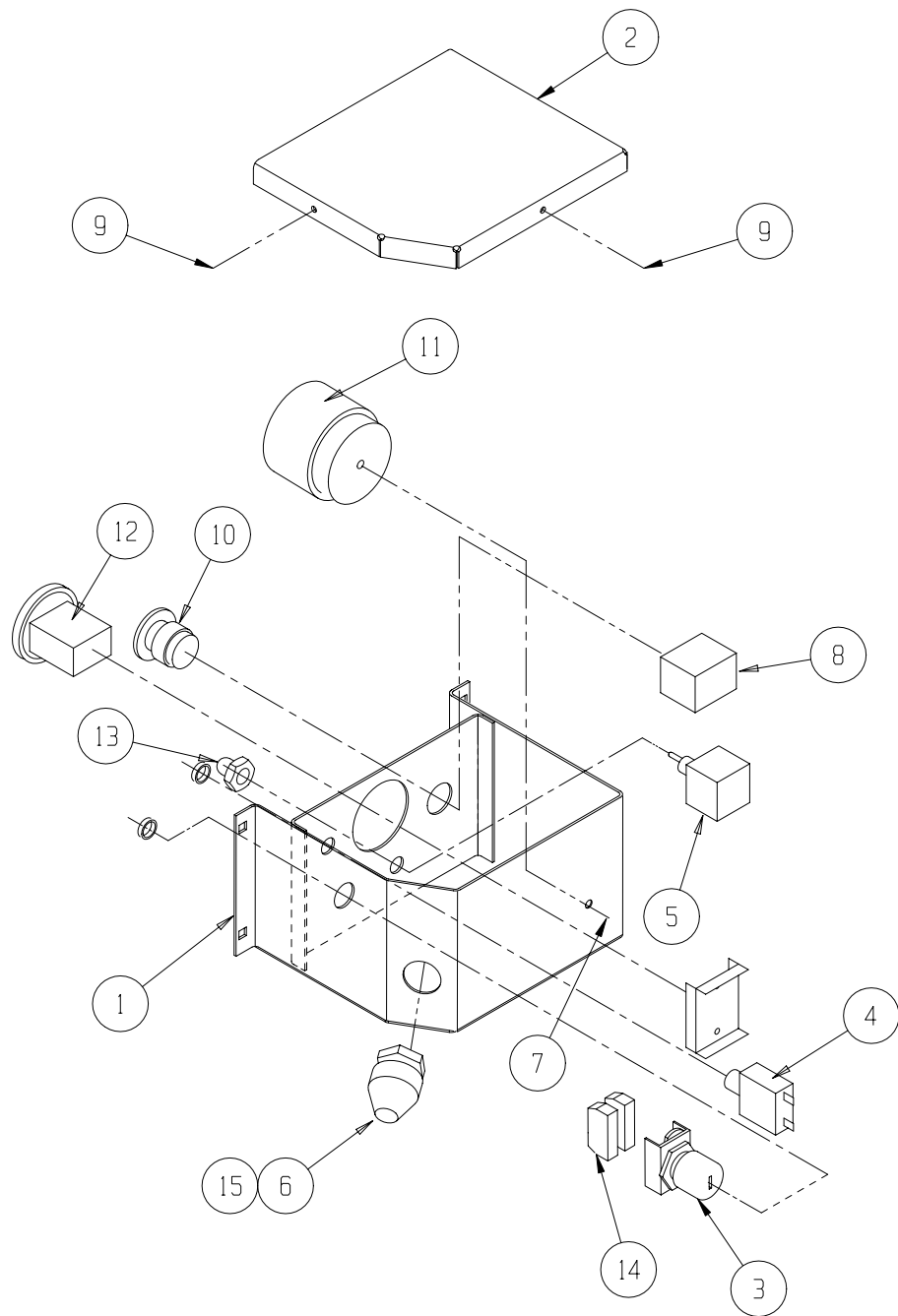
ITEM	PART NO.	DESCRIPTION	QTY
1	063953-001	CAP, RUBBER	1
2	065512-013	ROCKER, PIN	1
3	063953-007	SWITCH, INTERLOCK	1
4	065512-015	SWITCH, STEERING	1
5	065512-016	HANDLE HALF, RIGHT	1
6	065512-017	HANDLE HALF, LEFT	1
7	065512-018	BOOT, HANDLE	1



**Electrical Box Assembly**  
**107008-000**

ITEM	PART NO.	DESCRIPTION	QTY
1	107123-000	BOX, ELECT. WELDMT	1
2	107148-000	BOX TOP	1
3	066805-004	SWITCH KEY SELECTOR	1
4	068582-005	CIRCUIT BREAKER 5 AMP	1
5	012798-000	SWITCH TOGGLE	1
6	029925-001	CONNECTOR CABLE 3/4	1
7	011725-006	SCREW, 1/4-20 UNC PAN HD x3/4	1
8	066805-011	SWITCH CONTACT	1

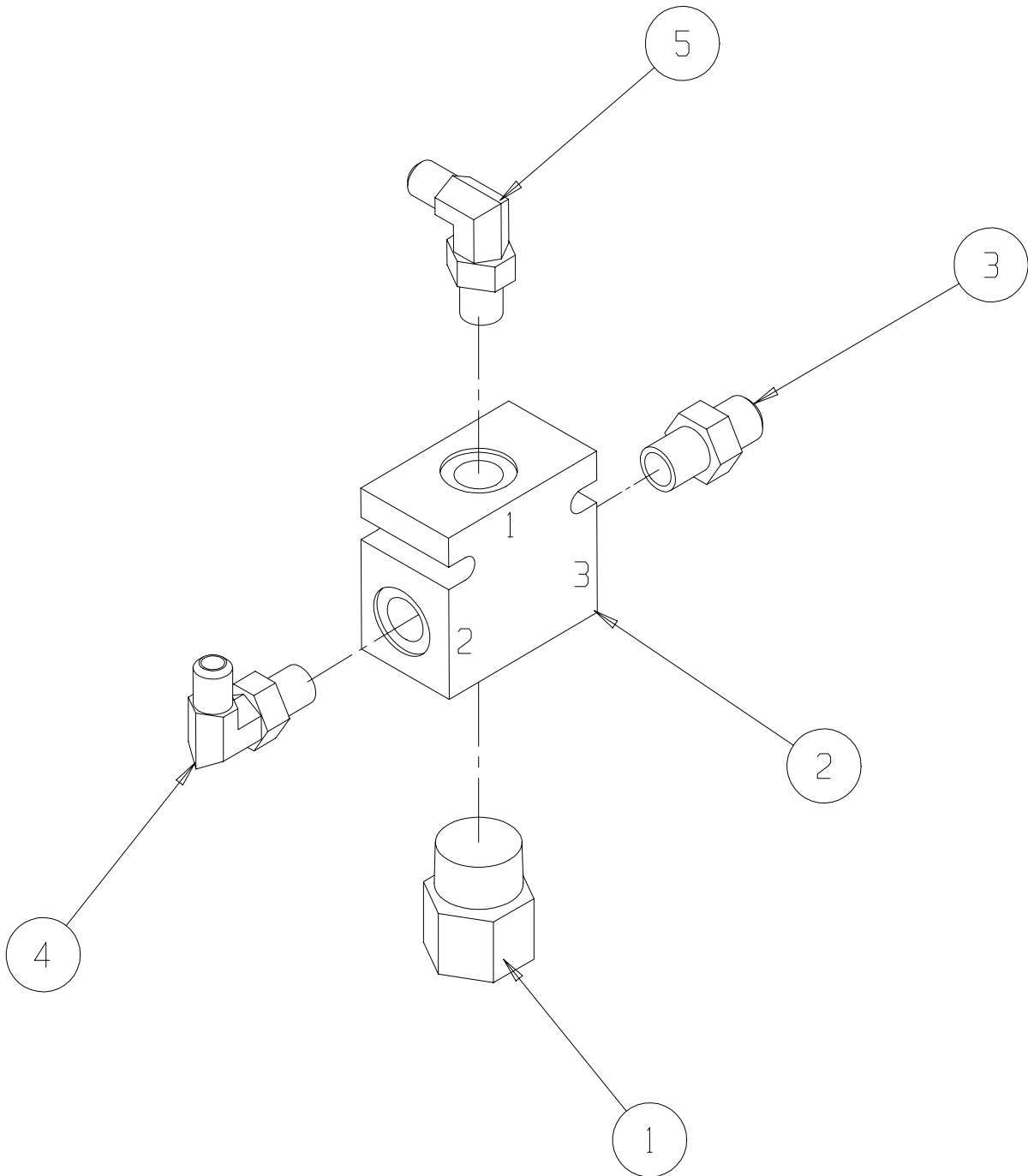
ITEM	PART NO.	DESCRIPTION	QTY
9	011811-004	SCREW,10-32 SELF-TAP x 1/2	3
10	066805-006	SWITCH HEAD-MUSHROOM	1
11	066807-001	ALARM, DUAL TONE	1
12	015752-000	LOW VOLTAGE HOUR METER	1
13	029872-000	BOOT SWITCH COVER	1
14	066805-010	CONTACT BLOCK	2
15	029939-003	LOCKNUT, CONDUIT 3/4	1



Flow Control Valve Assembly  
107061-000

ITEM	PART NUMBER	DESCRIPTION	QTY
1	063924-008	VALVE, FLOW CONTROL 1.5GMP	1
2	107062-000	VALVE BODY	1
3	011941-005	FITTING, 6MB-6MJ	1
4	011934-003	FITTING, 6MB-4MJ X 90°	1
5	011934-004	FITTING, 6MB-6MJ X 90°	2

NOTE: UNLESS OTHERWISE NOTED, TORQUE  
FITTINGS TO UR #106



# Hydraulic Tank Assembly

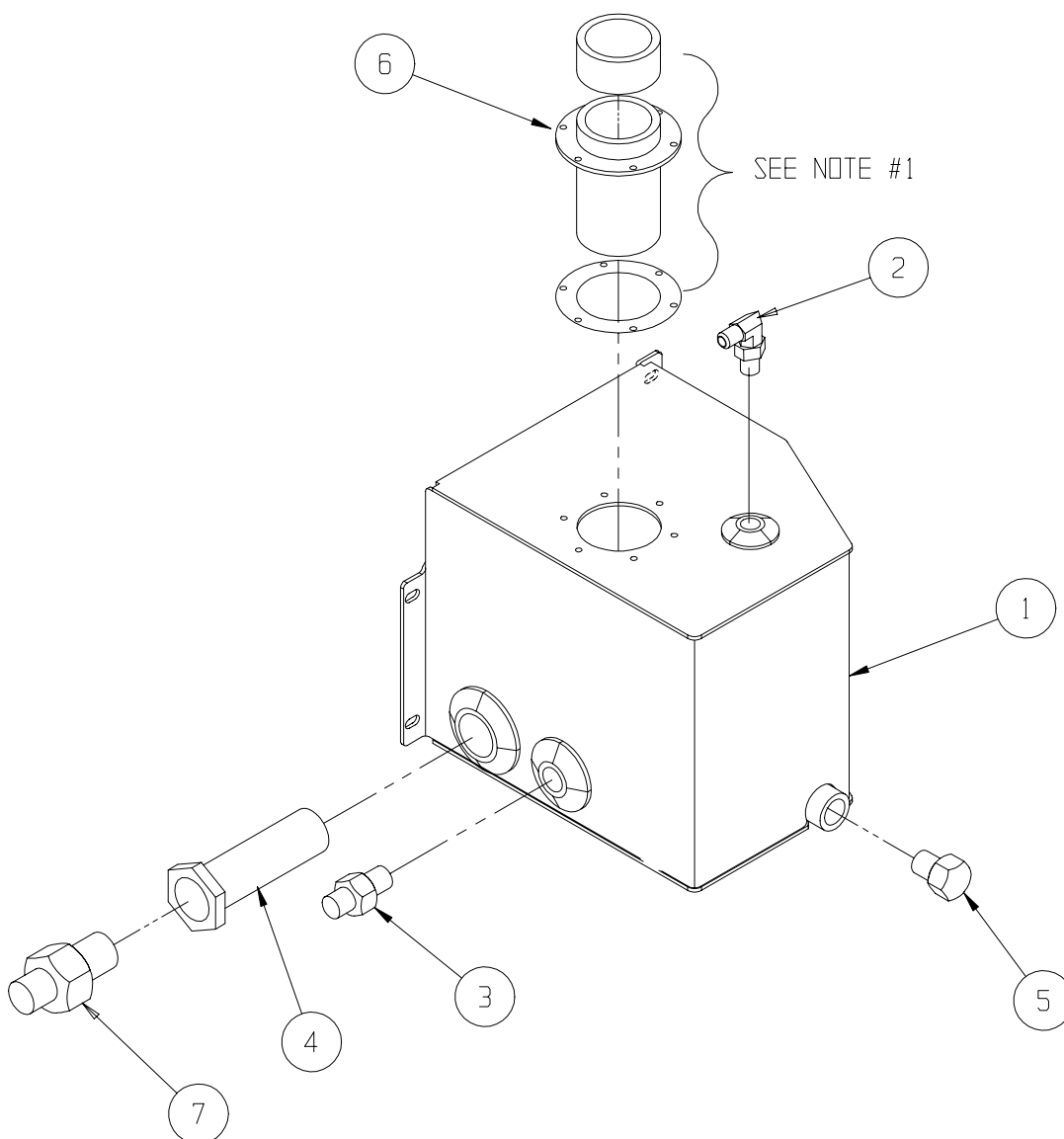
## 107007-001

ITEM	PART NUMBER	DESCRIPTION	QTY
1	107127-001	TANK WELDMENT	1
2	107084-000	FITTING 90° 1/4 NPT - 1/4 TUBING	1
3	011939-014	FITTING 8MP-6MJ	1
4	061818-000	SUCTION SCREEN/FITTING	1
5	021305-006	PLUG, MAGNETIC	1
6	005963-001	FILLER BREATHER	1
7	011939-021	FITTING 12 MP - 12 MJ	1

### NOTES :

- △1 USE EXISTING SCREWS SUPPLIED W/BREATHER. SILICON SEAL GASKET & SCREWS @ INSTALLATION.
- △2 UNLESS OTHERWISE NOTED, TORQUE FITTINGS TO UR #106

USABLE VOLUME = 1.53 GAL.  
TOTAL VOLUME = 1.96 GAL.  
(MINUS FILL LEVEL)

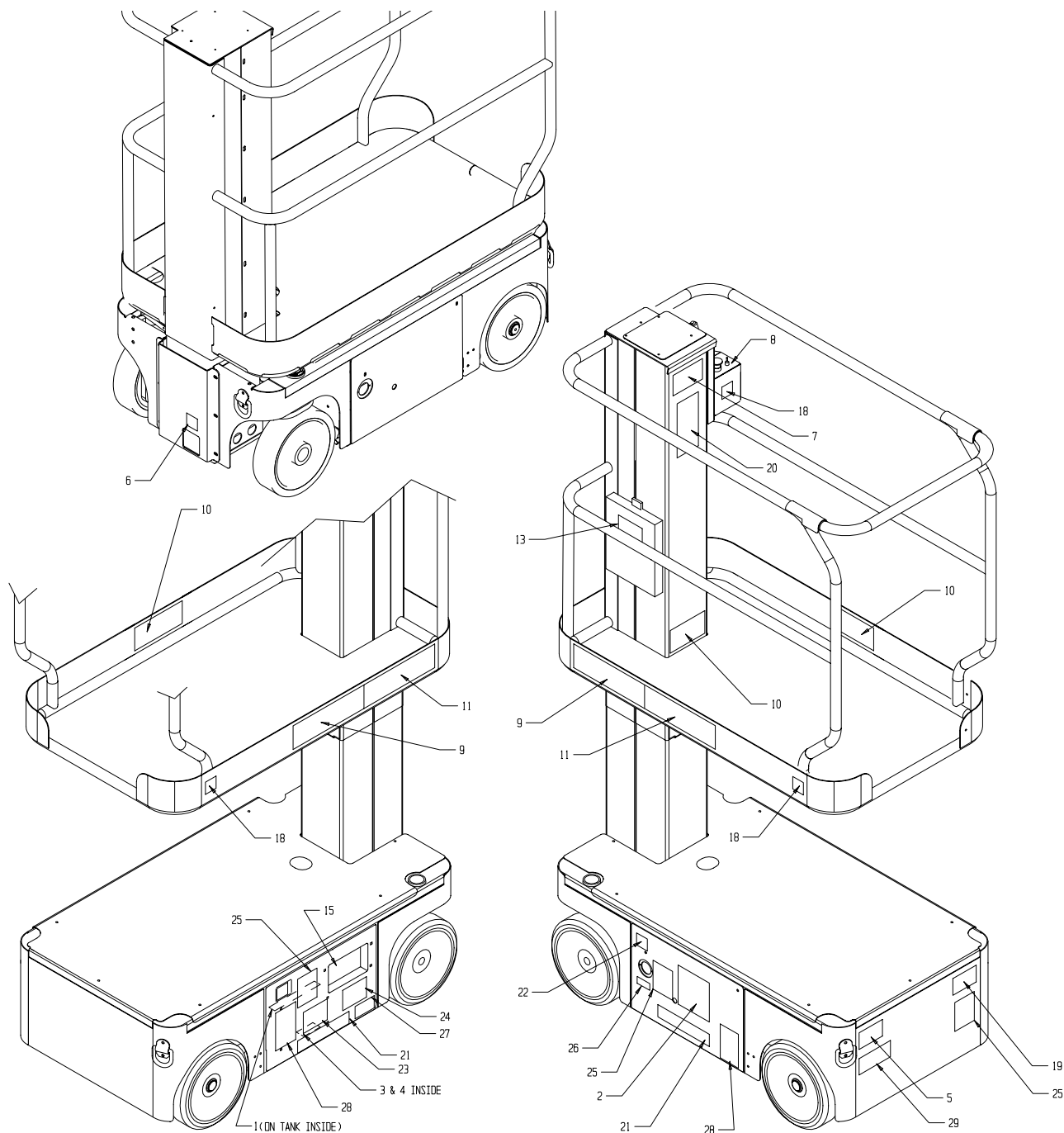


# Label Kit

## 107012-010

1	060197-000	LABEL HYD OIL	1
2	066552-000	LABEL HYDROGEN GAS	1
3	061205-005	NAME PLATE	1
4	065368-000	TACK	4
5	005221-000	LABEL BATTERY FLUID	1
6	005223-005	LABEL EMERGENCY DOWN	1
7	066554-000	LABEL BEFORE OPERATING	1
8	107050-000	LABEL CONTROLLER	1
9	061683-003	LABEL UPRIGHT	2
10	101250-000	LABEL MAX LOAD 500 LBS.	3
11	061684-014	LABEL TM12	2
13	010076-001	LABEL ATTENTION	1
15	065568-001	LABEL CONTROLS	1

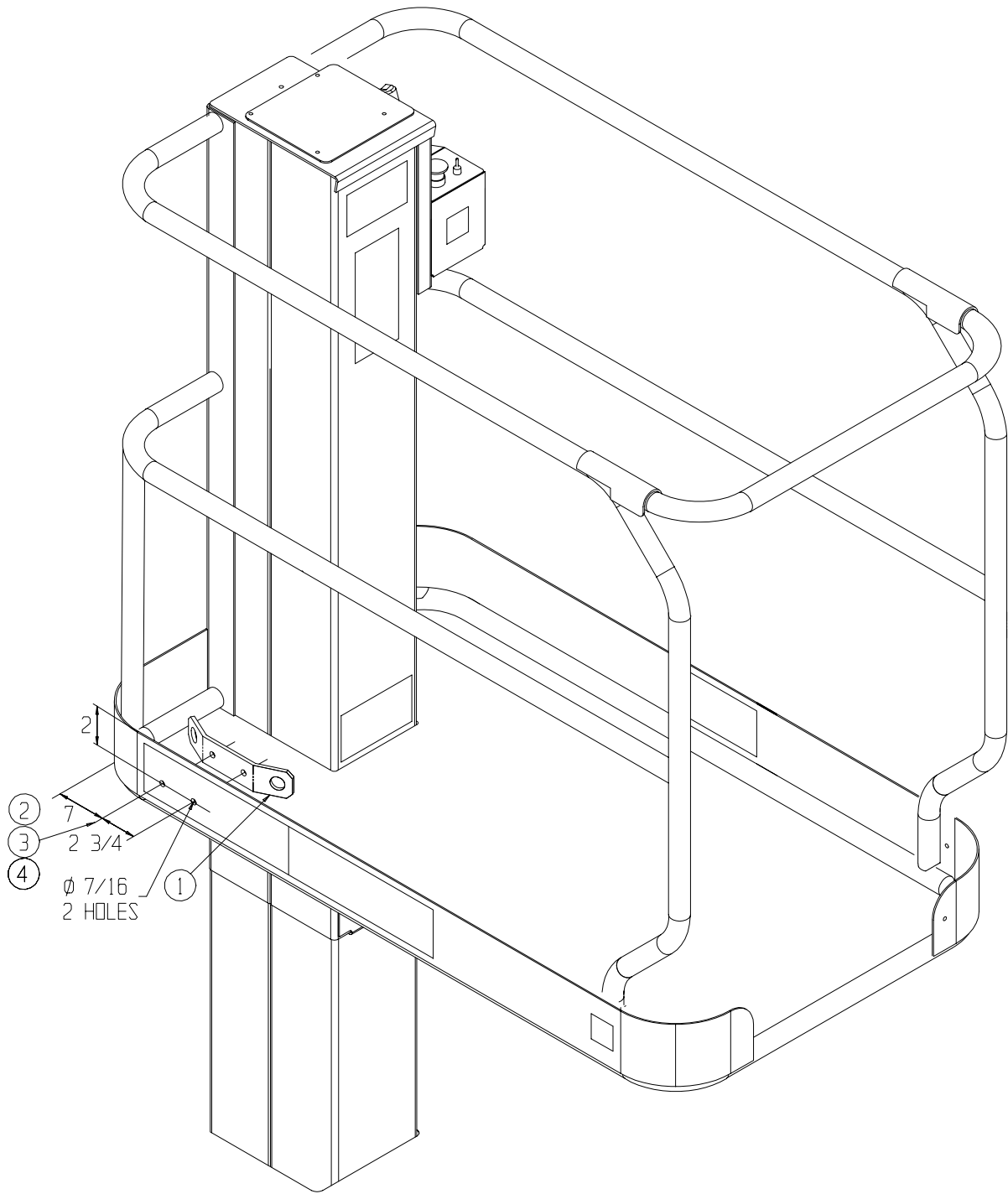
18	064444-000	LABEL USA	3
19	062562-001	LABEL BATTERIES	1
20	066550-001	LABEL DANGER	1
21	14222-003-99	LABEL FORK LIFT	2
22	061220-002	ANSI	1
23	066555-000	LABEL RELIEF VALVE	1
24	066568-000	LABEL LOWER PLATFORM	1
25	066556-000	LABEL COLLISION HAZARD	3
26	066522-000	LABEL BATTERY CHARGER	1
27	101252-000	LABEL MAX WHEEL LOAD (675 LBS)	1
28	066556-001	LABEL WARNING	2
29	107051-000	LABEL, BATTERY DISCONNECT	1





Lanyard Option  
030793-000

ITEM	PART NUMBER	DESCRIPTION	QTY
1	030712-010	ANCHORAGE	1
2	011254-006	HHCS GR 5 3/8-16 X 3/4	2
3	011240-006	WASHER 3/8	2
4	011248-006	NUT HEX ESNA 3/8-16	2





# **UpRight**

Call Toll Free in U.S.A.  
1-800-926-LIFT

---

**UpRight, Inc.**

801 South Pine Street  
Madera, California 93637

TEL: 559-662-3900

FAX: 559-673-6184

PARTS: 1-888-UR-PARTS

PARTS FAX: 1-800-669-9884

**UpRight**

Call Toll Free in U.S.A.

**1-800-926-LIFT**

107097-002  
07-02

**UpRight**

Unit S1, Park West Industrial Park  
Friel Avenue  
Nangor Road  
Dublin 12, Ireland

TEL: +353 1 620 9300

FAX: +353 1 620 9301