

Operator Manual

X-Series

SERIAL NO. 6013 to Current

WARNING

All personnel shall carefully read, understand and follow all safety rules, operating instructions and the Scaffold Industry Association's **MANUAL OF RESPONSIBILITIES (ANSI A92.6)** before operating or performing maintenance on any UpRight aerial work platform.

SAFETY RULES

NEVER operate the machine within ten feet of power lines. **THIS MACHINE IS NOT INSULATED.**



NEVER elevate the platform or drive the machine while elevated unless the machine is on firm level surface.



NEVER sit, stand or climb on guardrail or midrail.

NEVER operate the machine without first surveying the work area for surface hazards such as holes, drop-offs, bumps and debris.

NEVER operate the machine if all guardrails are not properly in place and secured with all fasteners properly torqued.

SECURE and lock gate after mounting platform.

NEVER use ladders or scaffolding on the platform.

NEVER attach overhanging loads or increase platform size.

LOOK up, down and around for overhead obstructions and electrical conductors.

DISTRIBUTE all loads evenly on the platform. See the back cover for maximum platform load.

NEVER use damaged equipment. (Contact UpRight for instructions. See toll-free phone number on back cover.)

NEVER change operating or safety systems.

INSPECT the machine thoroughly for cracked welds, loose hardware, hydraulic leaks, damaged control cable, loose wire connections and wheel bolts.

NEVER climb down elevating assembly with the platform elevated.

NEVER perform service on machine while platform is elevated without blocking elevating assembly.

NEVER recharge batteries near sparks or open flame; batteries that are being charged emit highly explosive hydrogen gas.

AFTER USE secure the work platform against unauthorized use by turning key switch off and removing key.

NEVER replace any component or part with anything other than original UpRight replacement parts without the manufacturers consent.

Introduction

This manual covers all models of the X-Series Work Platforms. This manual must be stored on the machine at all times.

Pre-Operation and Safety Inspection

Read, understand and follow all safety rules and operating instructions and then perform the following steps each day before use.

1. Open modules and inspect for damage, oil leaks or missing parts.
2. Check the level of the hydraulic oil with the platform fully lowered. Open the Left Module and remove the reservoir cap, oil should be visible in the filler screen. Add ISO #46 hydraulic oil if necessary.
3. Check that fluid level in the batteries is correct (See Battery Maintenance, Page 6).
4. Verify batteries are charged.
5. Check that A.C. extension cord has been disconnected from charger.
6. Check that all guardrails are in place, the Slide out Deck Extension is secured with the pin and all fasteners are properly tightened.
7. Carefully inspect the entire work platform for damage such as cracked welds or structural members, loose or missing parts, oil leaks, damaged cables or hoses, loose connections damaged or missing labels, and tire damage.
8. Move machine, if necessary, to unobstructed area to allow for full elevation.
9. Turn Chassis and Platform Emergency Stop Switches ON (Figure 1 & 2) by pulling the button out.
10. Turn the Chassis Key Switch (Figure 1) to **CHASSIS**.
11. Push Chassis Lift Switch (Figure 1) to **UP** position and fully elevate platform.
12. Visually inspect the elevating assembly, lift cylinder, cables and hoses for damage or erratic operation. Check for missing or loose parts.
13. Verify that the Pot Hole Protection Supports have rotated into position under each module.
14. Partially lower the platform by pushing Chassis Lift Switch to **DOWN**, and check operation of the audible lowering alarm.
15. Open the Chassis Emergency Lowering Valve (Figure 3) to check for proper operation by pulling and holding the knob out. Once the platform is fully lowered, close the valve by releasing the knob.
16. Turn the Chassis Key Switch to **DECK**.
17. Close and latch the module doors.
18. Check that route is clear of persons, obstructions, holes and drop-offs, is level and capable of supporting the wheel loads.
19. Unhook Controller from guardrail. Firmly grasp Controller while performing the following checks from the ground.



WARNING



STAND CLEAR of the work platform while performing the following checks.
Protect control console cable from possible damage while performing checks.

20. Pull Emergency Stop Button out to the ON position.
21. Position Function Switch to **DRIVE**. For 20W, 26, and 31 models, use both **HI** and **LOW** drive when performing step 22.
22. Grasp the Control Lever so the Interlock Lever is depressed (releasing the Interlock Lever cuts power to Controller), slowly position the Control Lever to **FORWARD** then **REVERSE** to check for speed and directional control. The farther you push or pull the Control Lever from center the faster the machine will travel.
23. Push Steering Switch RIGHT then LEFT to check for steering function.
24. Push in the Emergency Stop Switch Button.
25. Rehook Controller on side guardrail.



Figure 1: Chassis, Left Side

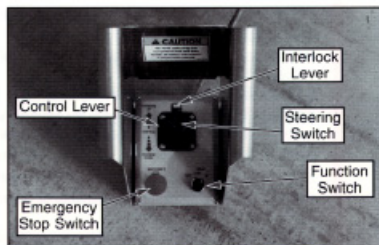


Figure 2: Controller

Emergency Lowering



WARNING



If the platform should fail to lower, **NEVER** climb down the elevating assembly.

Ask a person on the ground to open the Emergency Lowering Valve located at the rear of the machine (Figure 3).

1. Open the Emergency Lowering Valve by pulling on the handle.
2. To close, release the handle.

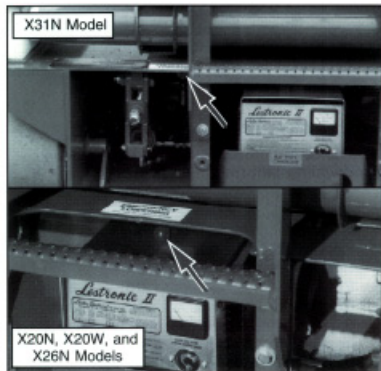


Figure 3: Emergency Lowering Valve Handle

Fold Down Guardrails

This procedure applies only to the X31N model for the purpose of passing through a standard double doorway. Guardrails must be returned to proper position before operating the work platform.

Fold Down Procedure

1. Unhook the controller from the side guardrail and place on the platform.
2. Unpin the front and rear upper rails from the side rails and rotate inwards.
3. Starting with the rollout deck rails and then the outer rails, lift up on each guardrail and fold inward.

Erection Procedure

1. Starting with the outer rails and then the rollout deck rails, raise each guardrail and drop it down securing it in the vertical position.
2. Rotate the front and rear upper rails outward and secure them to the opposite side rails using the retaining pins.
3. Hang the controller on the side guardrail.

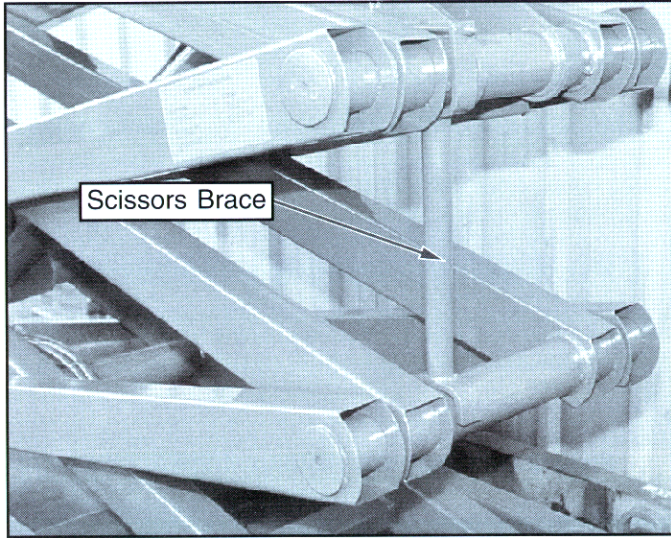


Figure 7: Blocking Elevating Assembly (X20N, X20W, X26N)

Blocking Elevating Assembly (X31N) See Figure 8

Installation

1. Park the work platform on firm level ground.
2. Verify both Emergency Stop Switches are ON.
3. Turn Chassis Key Switch to **CHASSIS**.
4. Position Chassis Lift Switch to **UP** and elevate platform approximately nine (9) feet (2.7 m), leaving enough room to freely rotate the Scissors Brace.
5. Pull out on the retaining pin and rotate the Scissors Brace into vertical position.
6. Push Chassis Lift Switch to **DOWN** position and gradually lower platform until the upper and lower pivot pins rest on the Scissors Brace.

Removal

1. Push Chassis Lift Switch to **UP** position and gradually raise platform until the Scissors Brace will clear the pivot pins.
2. Rotate the Scissors Brace counterclockwise until it locks into position parallel with the scissor arm.
3. Push Chassis Lift Switch to **DOWN** position and completely lower platform.

Routine Service

Use the following table as a guide for routine maintenance, refer to the Service Manual for complete service instructions.

SERVICE OPERATION	INTERVAL			
	Daily	Monthly or 50 Hrs.	6 Months or 250 Hrs.	2 Years or 1000 Hrs.
Clean entire work platform	X			
Check battery fluid level	X			
Charge batteries	X			
Check tires for damage	X			
Check lug nuts/bolts	X			
Check hydraulic fluid level	X			
Check for peeling, faded or missing labels & replace	X			
Check deck and guardrail fasteners for proper torque	X			
Inspect elevating assembly for bends or cracking	X			
Check for & repair collision damage	X			
Check emergency lowering valve operation	X			
Check electric motor brushes		X		
Check pivot pin bolts for proper torque		X		
Change hydraulic filter			X	
Check all fasteners for proper torque			X	
Change hydraulic fluid				X
Grease front spindle bearings			X	
Grease pot hole protection cylinder rod end bearing				X

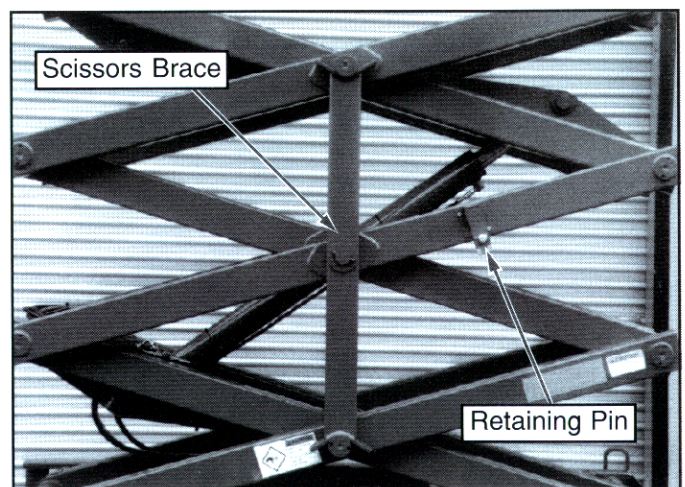


Figure 8: Blocking Elevating Assembly (X31N)

Parking Brake Release (Figure 4)

Perform the following only when the machine will not operate under its own power and it is necessary to move the machine or when towing the machine up a grade or winching onto a trailer to transport.

Note: X31N models have two identical brake adjustment nuts located on both sides of the ladder.

The Brake Adjustment/Release Nut(s) is (are) located at the rear of the machine to the right (and left) of the ladder.

1. To release the brakes turn the nut(s) counterclockwise until the brakes disengage from the tires.
2. The machine will now roll when pushed or pulled.
3. To reset the brakes, turn the nut(s) clockwise until the brakes have fully engaged the tires. Test the brakes on a 23 % slope before returning the machine to service.



WARNING



Never operate work platform with the Parking Brakes released. Serious injury or damage could result.

Never tow faster than 1 ft./sec. (.3m/sec.).

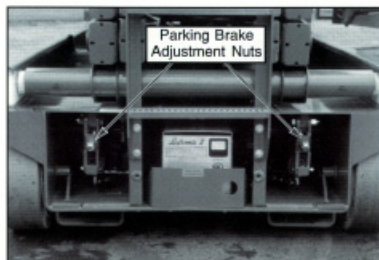


Figure 4: Parking Brake Release (X31N Shown)

After Use Each Day

1. Ensure that the platform is fully lowered.
2. Park the machine on level ground, preferably under cover, secure against vandals, children or unauthorized operation.
3. Turn the Key Switch to **OFF** and remove the key to prevent unauthorized operation.

Battery Maintenance



WARNING



Hazard of explosive gas mixture. Keep sparks, flame and smoking materials away from batteries.

Always wear safety glasses when working with batteries.

Battery fluid is highly corrosive. Rinse away any spilled fluid thoroughly with clean water.

Always replace batteries with UpRight batteries or manufacturer approved replacements weighing 62 lbs. each.

Check battery fluid level daily (Figure 7), especially if work platform is being used in a warm, dry climate.

If electrolyte level is lower than 3/8 in. above plates add distilled water only. DO NOT use tap water with high mineral content it will shorten battery life.

Keep terminals and tops of batteries clean.

Refer to the Service Manual to extend battery life and for complete service instructions.

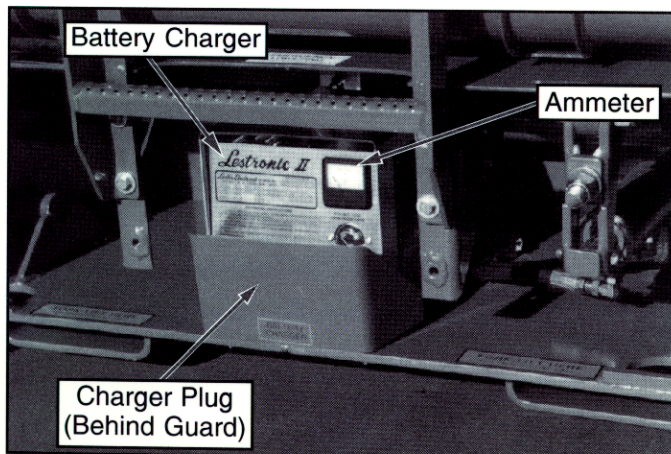


Figure 7: Battery Charger

Battery Charging

Charge batteries at end of each work shift or sooner if batteries have been discharged.



WARNING



Charge batteries in a well ventilated area.

Do not charge batteries when the work platform is in an area containing sparks or flames.

Permanent damage to batteries will result if batteries are not immediately recharged after discharging.

Never leave charger operating unattended for more than two days.

Never disconnect cables from batteries when charger is operating.

Keep charger dry.

1. Check battery fluid level (Figure 7). If electrolyte level is lower than 3/8 in. (10 mm) above plates add distilled water only.
2. Connect extension cord (12 gauge (1.5 mm²) conductor minimum and 50 ft. (15 m) in length maximum) to the charger outlet plug located at the rear of the machine. Connect other end of extension cord to properly grounded outlet of proper voltage and frequency.
3. Charger turns on automatically after a short delay, the ammeter will indicate DC charging current.
4. Charger turns off automatically when batteries are fully charged.

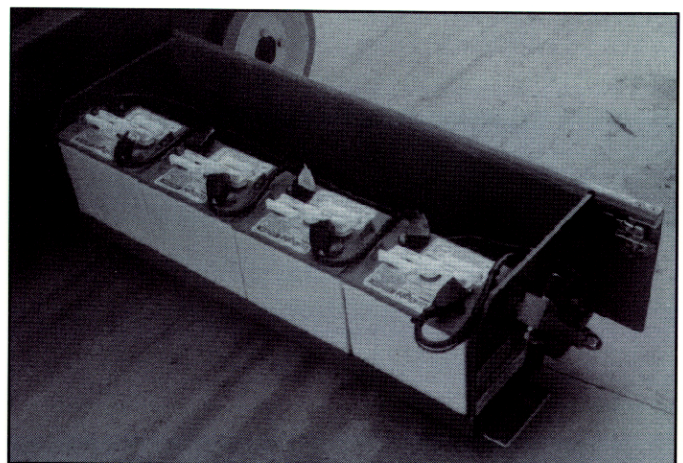


Figure 8: Battery Module

Transporting Work Platform

By Forklift

NOTE: Forklifting is for transporting only.

CAUTION

See specifications for weight of work platform and be certain that forklift is of adequate capacity to lift platform.

Forklift from the rear of the machine using the forklift pockets provided. If necessary, the machine may be forklifted from the side by lifting under the Chassis Modules.

By Crane

1. Secure straps to Chassis Lifting Lugs only (Figure 5 & 6).

By Truck

1. Maneuver the work platform into transport position and chock wheels.
2. Secure the work platform to the transport vehicle with chains or straps of adequate load capacity attached to the chassis tie down lugs (Figure 5 & 6).

CAUTION

Front tie down lugs are not to be used to lift work platform.

Overtightening of chains or straps through tie down lugs may result in damage to work platform.

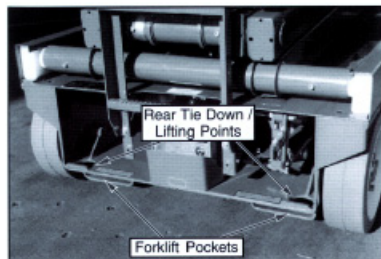


Figure 5: Parking Brake Release, Rear Tie Downs

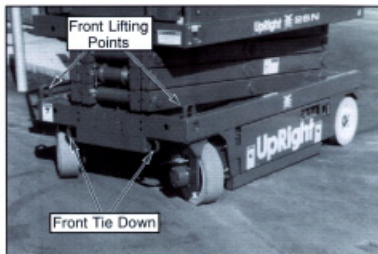


Figure 6: Front Tie Downs, Lifting Lugs

Maintenance

WARNING

Never perform service on the work platform in the Elevating Assembly area while platform is elevated without first blocking the Elevating Assembly.

DO NOT stand in Elevating Assembly area while installing or removing brace.

Blocking Elevating Assembly (X20N, X20W, and X26N) See Figure 7

Installation

1. Park the work platform on firm level ground.
2. Verify both Emergency Stop Switches are ON.
3. Turn Chassis Key Switch to **CHASSIS**.
4. Position Chassis Lift Switch to **UP** and elevate platform approximately nine (9) feet (2.7 m).
5. Rotate Scissors Brace towards the front and allow it to hang vertical over the lower scissor pivot tube.
6. Push Chassis Lift Switch to **DOWN** position and gradually lower platform until brace rests on lower scissor arm pivot tube.

Removal

1. Push Chassis Lift Switch to **UP** position and gradually raise platform until the lower end of the Scissors Brace will clear the lower scissor arm pivot tube.
2. Rotate Scissors Brace towards the rear so that it rests on the cylinder mount, stowed position.
3. Push Chassis Lift Switch to **DOWN** position and completely lower platform.